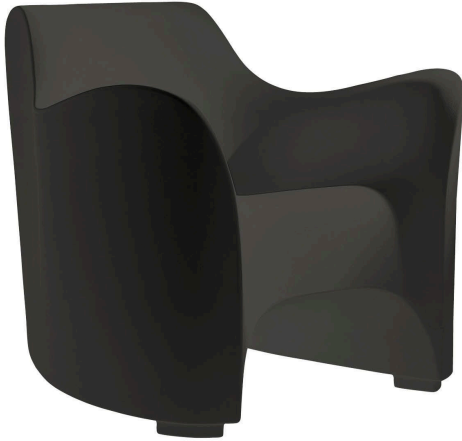


## TOKYO-POP

Tokujin Yoshioka,

The Tokyo-Pop collection marks, in 2002, the debut on the international scene by Tokujin Yoshioka, now considered one of the masters of contemporary design. The sofa, the armchair and especially the day-bed and the stool, forget the banality of rotational molding to become sculptures. Unforgettable and unusual shapes.



Polyethylene monobloc. Indoor/outdoor use.

### SKU

D28348A278057

### MATERIAL

polyethylene

### COLOUR

anthracite gray