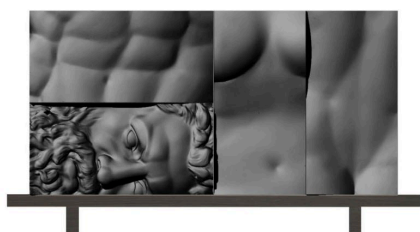


ERCOLE E AFRODITE-COMP.2

DriadeLab,

Driade presents the first project designed by Driade Lab, the company's research centre and creative core. Ercole e Afrodite are storage units featuring anthropomorphic lines with a powerful visual impact. It can be matt white or glossy black. With its unexpected combination of decorative art and historic language, Driade Lab has designed a low relief with classic sculpted shapes that becomes a precious furnishing item in an eclectic and sophisticated setting. The containers rest on a wooden platform, available in two sizes, and are placed vertically and horizontally; each of them is embellished with a low relief showing fragments of the human body, with an evident nod to the clear-cut lines of classical statues.



Modular combinable box system on a base made of poplar chipboard reinforced with tubular steel inserted inside, with grey painted oak finish. Structure of the containers in wooden strips, matte lacquering in black. Modules with hinged doors. Modules with pull-out drawers and internal tray. Front made of high density polyurethane, matte lacquering in black.

SKU

D10006J371B40

MATERIAL

lacquered mdf wood, oak veneer

COLOUR

black, gray stained